

Arts

HOMMAGE TO THE HAMBLEDON GALLERY

Private View
Saturday 21 January 2012
11am - 3pm

the exhibition continues until 11 February
open Wed - Sat 10am - 3pm and
at other times by appointment

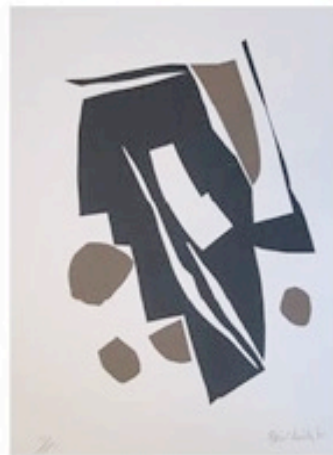
The Hambledon Gallery in Blandford opened in 1962 as an artists' meeting place and was run as a gallery from 1963 by Katharine Church (Kitty West), who, during the 1960's and 70's, exhibited works by well known British artists including Mary Fedden, Henry Moore and Keith Vaughan as well as successful artists working in Dorset such as Richard Batterham, John Hubbard and Henrietta Young. In 1964 Wendy Suffield began working at The Hambledon Gallery, gradually took over the running of it and from the late 70's began to introduce clothes and home wares which they have continued to sell to the present day.

The Art Stable is delighted to be able to celebrate the 50 year anniversary of the Hambledon Gallery with an exhibition which will include some of the artists who showed there, a tribute to an ongoing, vibrant artistic life in Dorset.

There will be a selection of Art Books available for sale for the duration of the exhibition

illustrated front: Mary Fedden, Basket with Lemons, 1971, lithograph, 76 x 64.8cm

illustrated above: Robert Medley, Samson's Destiny, screenprint, 61 x 40 cm



Richard Batterham
Prunella Clough
Mary Fedden
David Hockney
John Hubbard
R.B. Kitaj,
Robert Medley
Henry Moore
Sidney Nolan
Howard Phipps
John Piper
Mary Potter
Ceri Richards
William Scott
Philip Sutton
Julian Trevelyan
Keith Vaughan

The Art Stable
Child Okeford Blandford Dorset
DT11 8HB
01258 863866
kellyross@theartstable.co.uk
www.theartstable.co.uk

To Let

Workshop Space

160 - 650sq feet of flexible work/studio space
Central Abbotsbury location
Suitable for arts or crafts based activities.

Enquiries to Paul Gower on 01305 871229
or e-mail pg@paulgowerfurniture.co.uk

walford mill
crafts A CONTEMPORARY CRAFT VENUE
IN WIMBORNE SHOWCASING
LOCAL AND NATIONAL MAKERS



Jewels from Brazil
January 14th - February 26th 2012

Stone Lane, Wimborne, Dorset BH21 1NL

Open: Monday - Saturday: 10am - 5pm and Sunday: 11am - 4pm
Telephone: 01202 841400 Website: www.walfordmillcrafts.co.uk
Admission: Free



walford mill crafts

A CONTEMPORARY CRAFT VENUE
IN WIMBORNE SHOW CASING
LOCAL AND NATIONAL MAKERS



Walford Mill Crafts in Wimborne is offering an opportunity for a number of craft makers and DVA members to appear, demonstrate and sell their crafts at the Mill during Dorset Art Weeks 2012.

Indoor and outdoor spaces are available on a daily rate from £20 (3 days min) or for the entire event (max £225).

Benefit from:

- * Guaranteed visitors - Walford Mill attracted over 3,000 people to DAW2010.
- * All other Art Week activities and group brochure entry
- * Promotions, advertising, social media and press activity and signage to support the event
- * Be amongst a number of other friendly and supportive makers in a creative environment

Call Nicole or email info@walfordmillcrafts.co.uk for more information by 16th January. Terms and conditions apply.



Photo: Andy Starmore

Stone Lane, Wimborne, Dorset BH21 1NL

Open: Monday - Saturday: 10am - 5pm and Sunday: 11am - 4pm
Telephone: 01202 841400 Website: www.walfordmillcrafts.co.uk
Admission: Free



Charity No: 1049540

